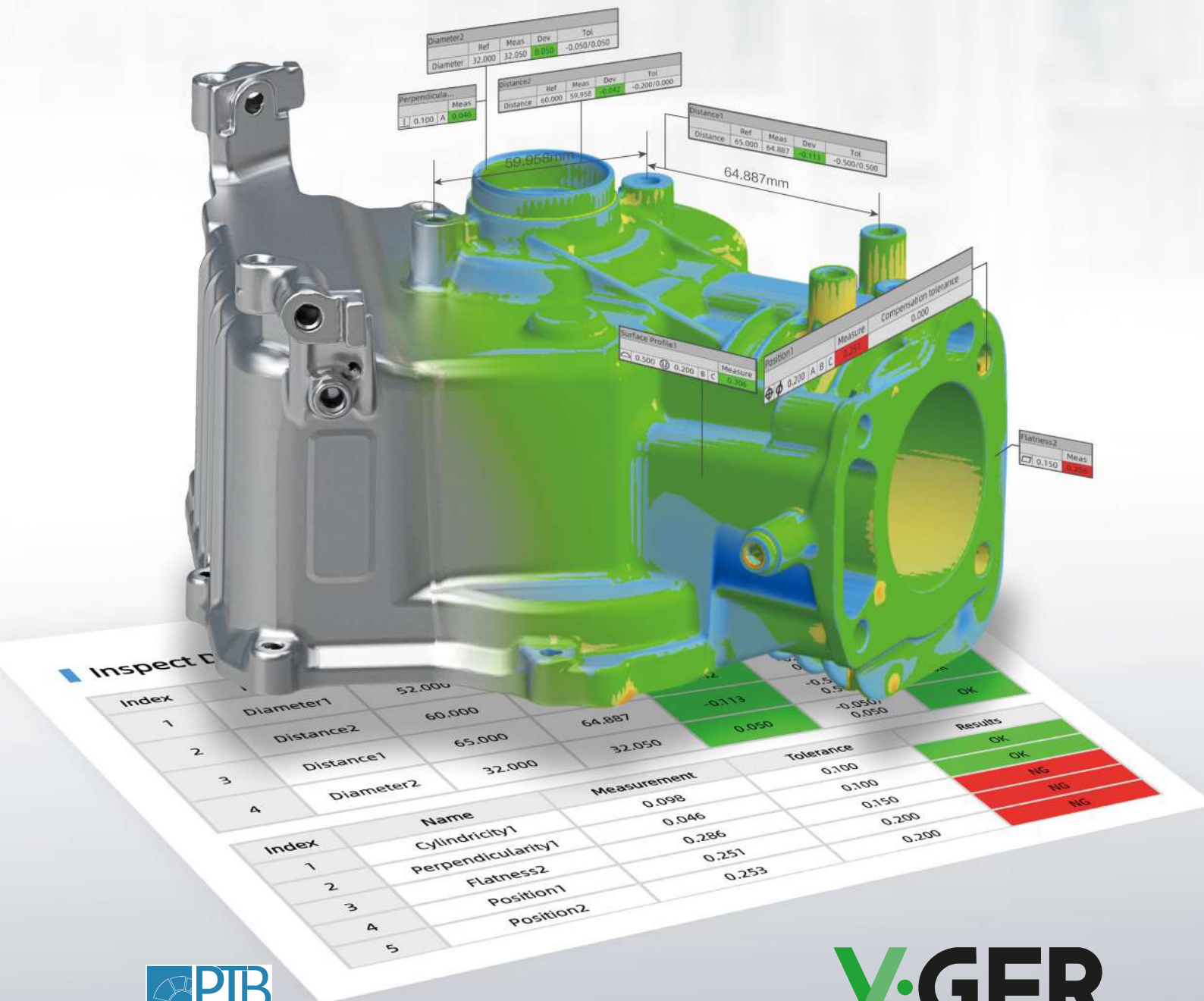
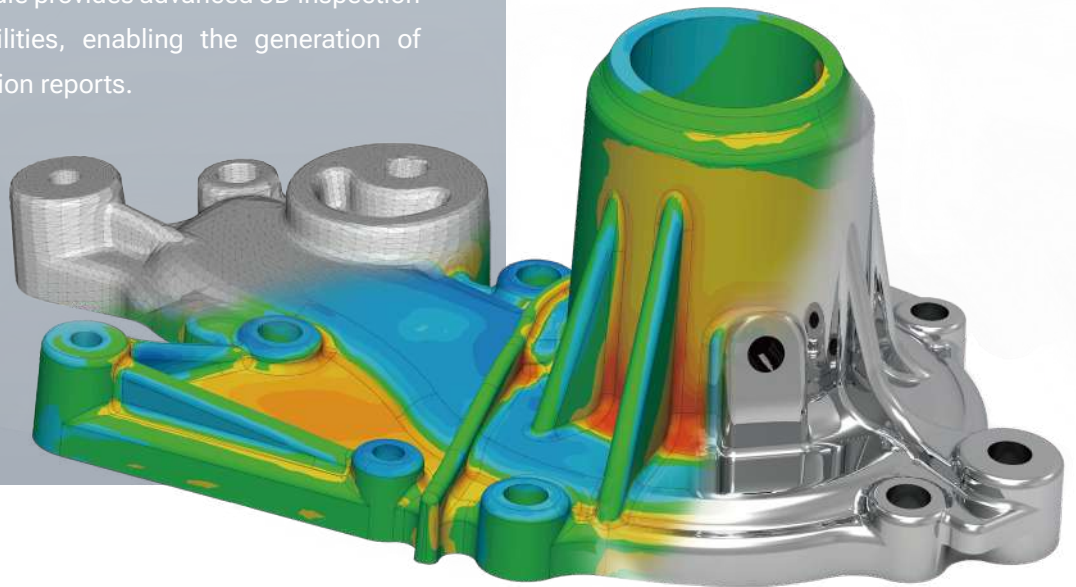


# SHINING3D Inspect

## 3D Inspection Module



SHINING3D Inspect is a 3D inspection module that has received dual measurement accuracy certification from PTB (Physikalisch-Technische Bundesanstalt) for both Gaussian and Chebyshev software standards in length measurement. This PTB-certified module provides advanced 3D inspection and evaluation capabilities, enabling the generation of comprehensive inspection reports.



## Key Features



**Multi-Format Data Import and Management**



**2D Dimensions Inspection**



**Multi Alignment Toolset**



**Measurement Toolset**



**2D & 3D Comparison**



**Customized Reporting**



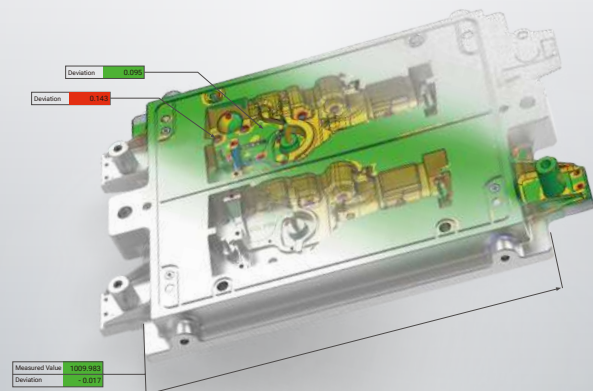
**GD&T Evaluation**



**Cross-Section Analysis Toolset**



**Intelligent Feature Recognition**





### GD&T Inspection

Equipped with powerful GD&T tools, this feature enables precise measurement of feature diameter, position, orientation, distances and angles between features. An intuitive 3D display provides clear visual feedback for comprehensive analysis.



### On-Scanner Inspection

SHINING3D Inspect delivers a seamless non-contact measurement experience on FreeScan Omni, enabling users to run inspection templates with just one click. Designed with an intuitive interface and clear visual results, it simplifies complex workflows and ensures efficient, accurate inspections — perfect for diverse scenarios and industries.



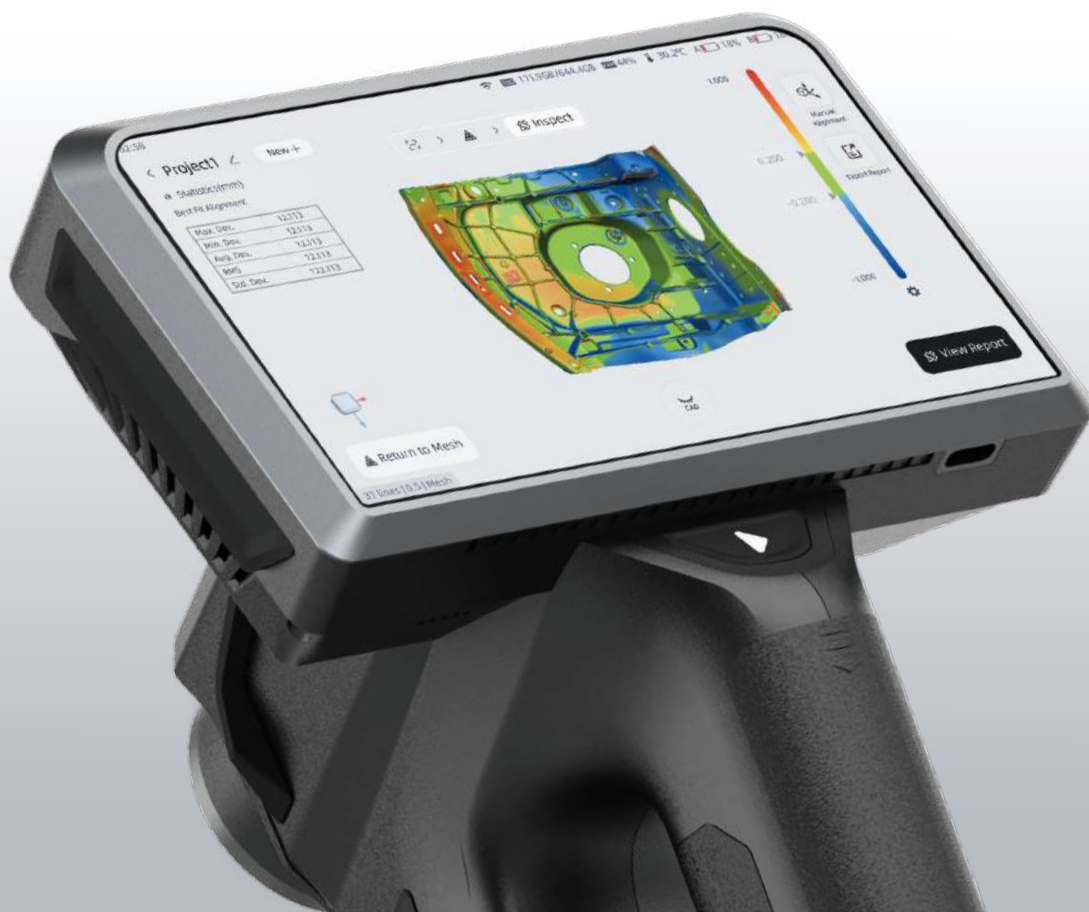
### 3D Mesh Inspection

Import scanned data and employ multiple alignment methods for comprehensive 3D / 2D comparisons and other inspection functionalities. This feature supports full field inspection, allowing for thorough analysis of your mesh data.



### Auto Inspect

Auto Inspect provides an integrated scan-to-inspection solution, significantly enhancing efficiency. It supports batch processing of inspections, making it ideal for high-volume tasks and ensuring consistent, automated quality control.





## Benefits



### Streamlined Workflow with Integrated Hardware and Software

SHINING 3D offers a comprehensive solution that smooths your entire workflow, from 3D scanning to final inspection. Our hardware and Inspect module are designed to work together seamlessly, ensuring data and project file compatibility and eliminating any import/export hurdles. This integration dramatically boosts efficiency throughout your scanning and inspection process.



### Visualized Inspection Results with Customizable Reports

The software offers clear visualization of all inspection results. With robust report editing functionalities, you can easily customize reports to meet your specific needs. This ensures informative and professional documentation, perfectly aligned with your workflows.



### Industry-Specific Module Inspection

We develop specialized inspection modules to meet the demands of specific industries. Combining specialized industry knowledge with user-friendliness, these modules efficiently handle unique business scenarios and requirements within their target sectors.



### Advanced Dimension Functions

SHINING3D Inspect offers direct and rapid measurement capabilities based on 3D scan data, eliminating the need for reference data. This powerful feature also enables direct measurement of sphere-to-sphere and point-to-point distances, even when a full inspection isn't required.

Authorized Reseller:

**V-GER SRL**

Registered office: Via Bentivogli, 4 40055  
Castenaso (BO) Italy  
P.IVA - 03387001203

Headquarters: Via Oberdan, 2 - 40055  
Villanova di Castenaso (BO) Italy  
Ph & Fax: +39 (0) 51802864  
E-mail: [info@vger.eu](mailto:info@vger.eu) - [www.vger.eu](http://www.vger.eu)

**V-GER**  
COMPETENCE IN 3D SCANNING