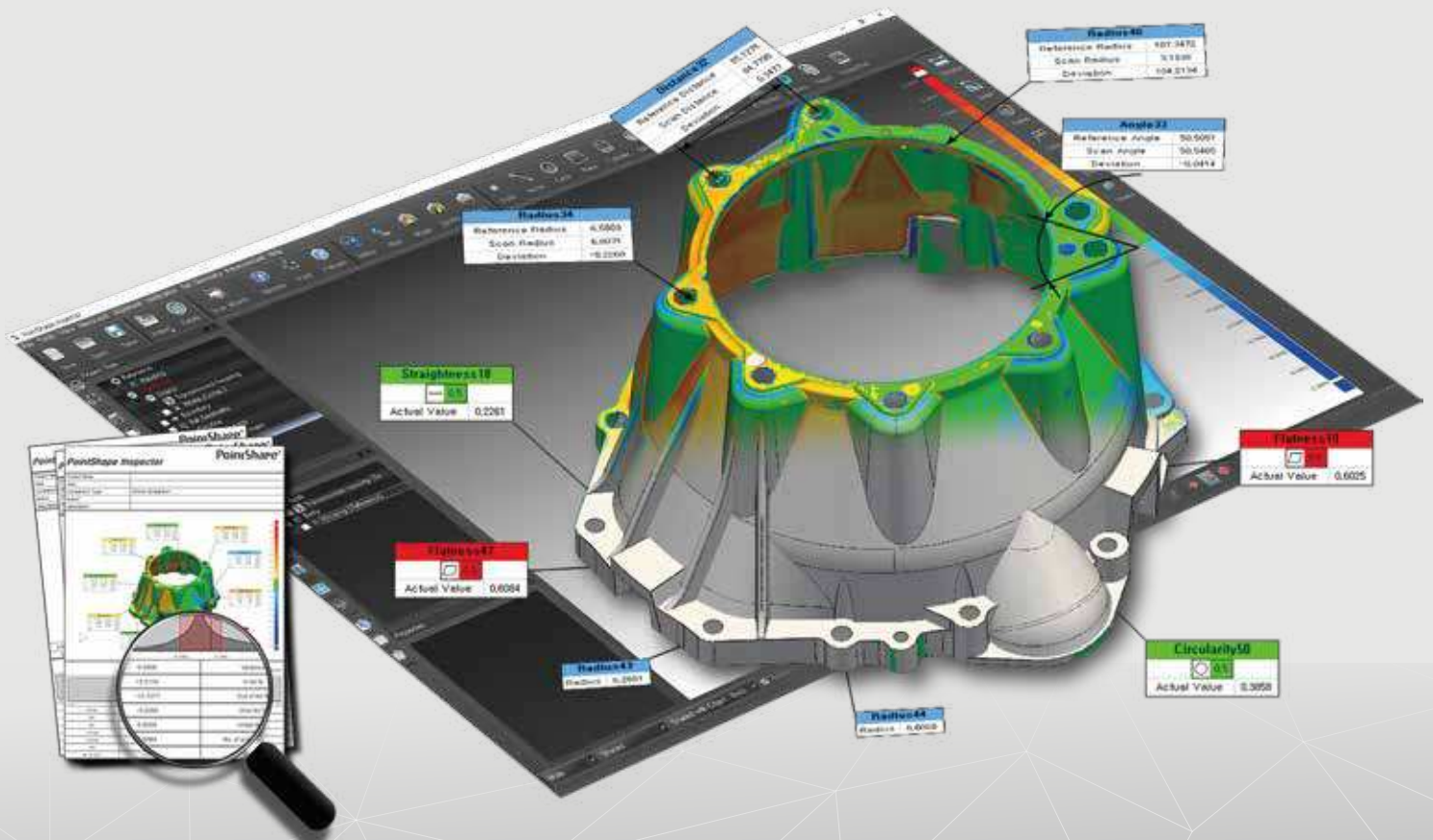


# The Powerful Inspection Solution



## PointShape™ Inspector



## Scanning & Polygon Optimization Industrial 3D Metrology Software

With innovative advances in 3D scanning technology, engineers are now able to leverage 3D pointcloud data that exceeds traditional measurement methods. (e.g. CMM,, etc.)

Leveraging these pointcloud data is more intuitive to engineers allowing to move beyond the limits of existing inspections.

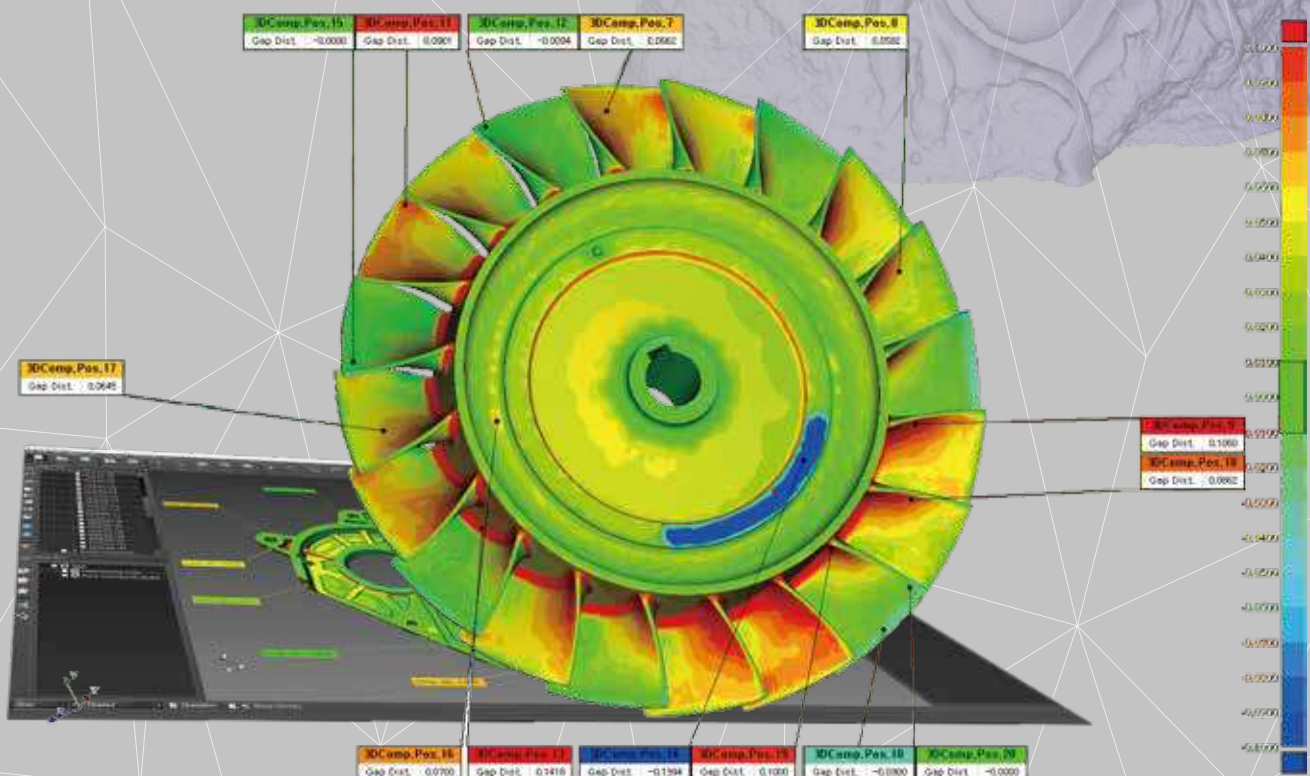
**Point Shape Inspector** is one of the most powerful inspecting software for engineers to innovatively control 3D CAD data that they designed. PointShape Inspector allows to import all major CAD programs raw data such as Siemens NX, CATIA V5, Pro/ENGINEER and it certainly reduces man-day and cost by simple workflow, user friendly interface, and precise calculation.

The PointShape Inspector functions of Whole Deviation, Section Deviation, Point Deviation, Measurement, GD&T Information, and Report have been developed for any CAD engineers to easily approach and instantly use.

- Precise Quality Management Process
- CAD program Compatibility (Siemens NX, CATIA V5, Pro/ENGINEER)
- Export Quality Management Report

## Key Features

- Point/ Polygon Processing : 2D/ 3D Triangulation, Decimation, Smooth, Subdivide, Fill hole, etc.
- Registration: Manual, Global, Automatic
- Alignment : Initial, Manual, Best Fit, Automatic, Selection, RPS, Datum, 3-2-1
- 3D & 2D Comparison : Whole, Section , Point
- Native CAD Format Support : Siemens NX, Catia V5, Pro Engineer, Solid Works, Solid Edge, 3D Studio 3ds, Autodesk DXF, Parasolid, IGES, STEP..... etc.
- Measurement : Distance, Angle, Radius, Calculate Area, Calculate Volume
- Reference Geometry : Point, Line, Circle, Plane, Cylinder, Sphere, Cone
- Polyline Section Creation
- GD&T : Straightness, Flatness, Circularity, Cylindricity, Perpendicularity, Parallelism
- Report : Automatic PDF Creation





# Workflow

## Native CAD Data

- CATIA
- SOLIDWORKS®
- Siemens NX®
- Solid Edge
- Inventor®
- PTC Creo®

## Raw Scan Data

- STL, PLY, OBJ, PTS,
- LAS, LAZ, DXF, ASC,
- TXT, E57, XYZ, PCD,
- CSV, NEU
- ETC...

## The fixed-CAD

- Initial
- Manual
- Best-fit
- Automatic
- RPS, Datum, 3-2-1
- Etc...

## Scan Data Optimization

- 2D, 3D Triangulation
- Registration, Merge
- Decimation, Smooth
- Fill hole, Subdivide
- Polygon Optimization
- Etc...

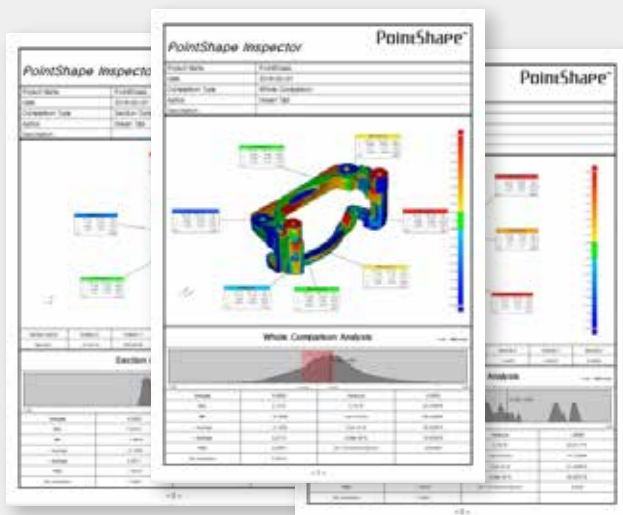
CreatedGeometry

Alignment

3DComparison  
(Whole, Section, Point,...)

Measurement, GD & T

Report(Export PDF)

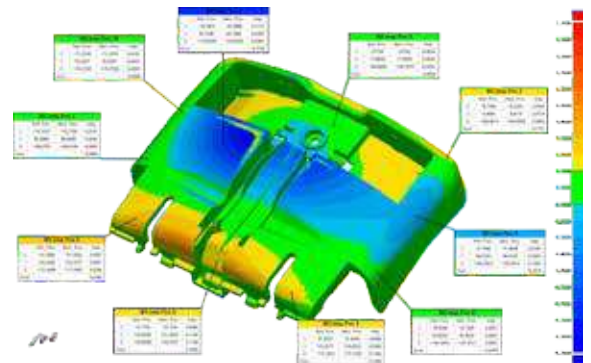


## Scanning & Polygon Optimization Process

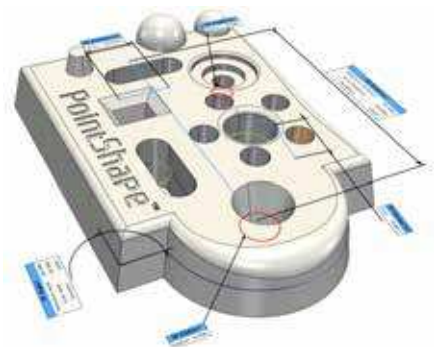
After powerful scanning registration process, Polygon Optimization (decimation, smoothing, Subdividing, Fihole etc..) process is also available. The whole user friendly process will optimize the scan data for industrial standard.



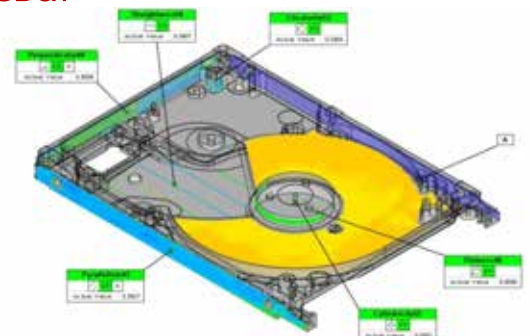
## 3D Comparison (Whole, Section, Point)



## 2D Section & 2D Dimensioning



## GD&T

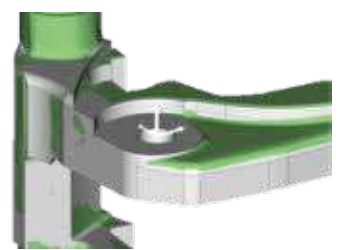
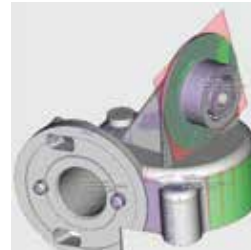
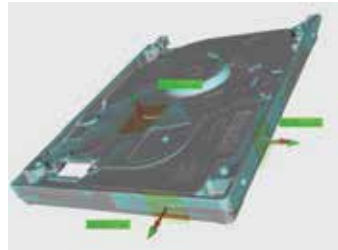
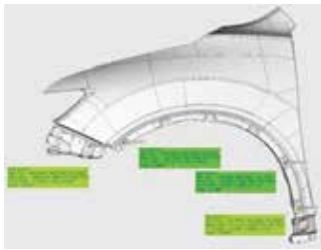


■ R P S Alignment

■ Datum Alignmet

■ 3-2-1 Alignment

■ Coordinate Alignment



## ■ Specifications

Tool Names	Function Names	PointShape™ Inspector	PointShape™ Editor
User Interface	CAD Importing	*.3dxml*.sat*.sab*.model *.CATPart*.CADProduct*.dwg *.igs*.iges*.ipt*.iam*.jt*.prt *.x_t*.x_b*.prt*.asm*.par *.psm*.sldprt*.sldasm*.stp *.step*.vda*.stl	O
	Scan Importing	*.3dxml*.sat*.sab*.model *.CATPart*.CADProduct*.dwg *.igs*.iges*.ipt*.iam*.jt*.prt *.x_t*.x_b*.prt*.asm*.par	O
Point Process	Register(Manual / Auto), Merge, Noise Delete, Noise Filtering	O	O
Polygon Process	Smooth / Decimate / Subdivide, Fill Hole, Remove Marker, Scale	O	O
Polygon Healing	Abnormal / Cross / etc.,	O	O
Alignment	Initial, Manual, Automatic, Selection, RPS, Datum, 3-2-1, Coordinate	O	X
Macro Manager	Macro	O	X
Comparisons	Whole Comparison	O	X
	Section Comparison	O	X
	Point Comparison	O	X
Reference Geometry	Intelligent Reference Geometry Recognition	O	X
	Creation of auxiliary geometry using CAD	O	X
	Point, Vector, Circle, Plane, Polyline	O	X
	Cylinder, Sphere, Cone	O	X
Measurements	Distance	O	X
	Angle	O	X
	Radius	O	X
	2D dimensioning	O	X
Report	Automatic Report in PDF	O	X
Advancements and Functions Coming Soon	Complete GD&T functions	O	X
	3D PDF Reporting Tools	O	X
	Advanced Reporting Toolset	O	X
	Import and Support Key Native MCAD formats with PMI	O	X

# PointShape™

Authorized Reseller:

V-GER S.r.l

Registered office: Via Bentivogli, 4 40055

Castenaso (BO) - ITALY

P.IVA - 03387001203

Headquarters: Via Oberdan, 2 - 40055

Villanova di Castenaso (BO) - Italia

Ph &amp; Fax: +39 (0)51 802864

E-mail: info@vger.eu - www.vger.eu

# V-GER

COMPETENCE IN 3D SCANNING